

ALL YOU NEED IS ...

VS+



... the universal roof attachment series from Renusol

The VS+ range is characterised by its extreme high versatility. The additional range of roof hooks is compatible with the most popular roof coverings used in the UK for wooden substructures. Benefit from a wide range of solutions, providing you with the essential flexibility for a quick, easy and safe PV installation on pitched roofs.

Innovative design

- Dimensions specific for UK roof tiles and battens
- Optimal design features for installation on UK rafters
- Increased static values for higher load capacities

Flexibility

- 3 Roof hooks for your preferences
- Cost optimized solutions: UK Roof hook Pantile/UK Roof hook Plain
- Endless opportunities: Roof Hook Flexible
- Installation in portrait and landscape

Optimized logistics and warehouse management

- 3 items for nearly all your pitched roof projects
- Accessories for all your application areas
- Efficiently packed for best handling on site
- Pre-assembled and ready for installation

For specific questions please contact us:

Sales department

Phone: +49 221 788707-19
 Fax: +49 221 788707-97
 Email: sales-support@renusol.com

Technical department

Phone: +49 221 788707-29
 Fax: +49 221 788707-98
 Email: technical-support@renusol.com

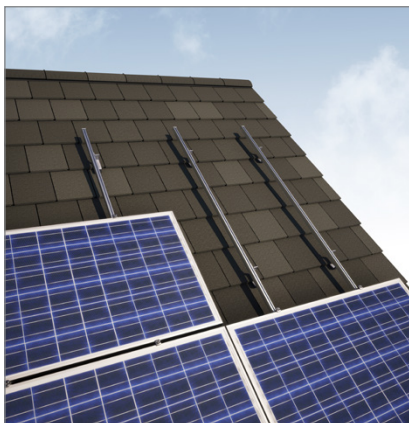
Marketing department

Phone: +49 221 788707-54
 Fax: +49 221 788707-99
 Email: marketing@renusol.com








Renusol GmbH
 Piccoloministraße 2
 51063 Cologne
 Germany

Phone: +49 221 788707-0
 Fax: +49 221 788707-99
 Email: info@renusol.com

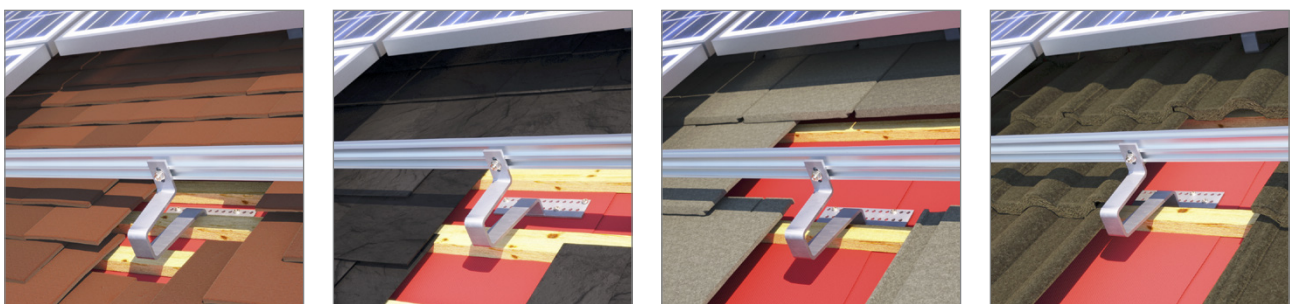
www.renusol.com



UK Roofhook Compatibility chart (suggestion)

	 UK Roof Hook Flexible R420182	 UK Roof Hook Pantile R420180	 UK Roof Hook Plain R420181
 Plain Tile	●	—	●
 Natural slate	●	—	●
 Single & double Roman	●	●	—
 Modern Interlocking Tile	●	●	—

Renusol Flexible - the multitalent of the UK Roof Hook series ...



... is the perfect fit for plain tiles, natural slate, modern interlocking and single/double Roman tiles